



*The Publication of the Hamlin Lake Preservation Society— Fall 2011*

## HLPS Annual Dinner Meeting

August 6<sup>th</sup>, 2011

The 2012 Hamlin Lake Preservation Society Board from left to right: Jim Storm, Kathy McGill, Alison Puffer, Jim Clark, Wayne Disegna, Ruth Crompton, Wayne Andersen, Kent Gage, Mark Otto, and Dick Todd. Missing are Wilhelmina Steketee, Gin Hluchan, and Bruce Pelletier



Saturday

The annual meeting was held at the Hamlin Township Hall on Aug. 6th. The social hour was from 6:00pm to 7:00pm followed by a delicious catered dinner. This year there were about 80 people in attendance. The township hall was very comfortable and everyone enjoyed not only good food but also good fellowship. A brief business meeting followed the dinner.



Jim Pinkerton receiving a plaque of appreciation from Lloyd Gearhart Board Rep.

The organization is financially sound. This year's ice cream social and fireworks display were very successful. Our thanks to Wil Steketee and her committee for the ice cream social and our thanks to Kent Gage and Lloyd Gearhart for the fine fireworks. The water quality of the lake continues to be very good even though we had heavy weed and algae growth late this summer. 150,000 walleye were planted in the lake this year by the DNR and the Walleye Assoc. plus we were able to plant 7500 hybrid bluegills.

We are sometimes asked why we have so many special funds. The reason is our bylaws state that we cannot use the general membership fund for such things as the fish fund, walleye fund, fireworks fund, and memorial fund.

Leaving the board this year are our President Jim Pinkerton, our Treasurer Linda Leibole, Sue Austin, Lloyd Gearhart, Bonnie Wood, and Diane Boulais. We thanked them all for their wonderful years of service on the board.

A slate of new candidates for the board was presented by the nominating committee. They are Ginny Hluchan, Wilhelmina Steketee, Dick Todd, Tom Kalina, & Mark Otto.

There were no further nominations and all candidates were unanimously elected.

The evening's program was presented by Judy Thorpe. It was a historical review of the dummy train which used to run from Ludington to Epworth. Part of her program included a skit that represented a typical dummy train ride from downtown Ludington to Epworth, The cast of characters for the skit were Peg Gage, Alison Puffer, and John Thorpe. It was a very interesting and entertaining program. Judy has also agreed to write a historical column for the Currents.



John, Peg, and Alison in period costume starting their train ride

# Hamlin Lake Preservation Society Board

## OFFICERS

**President, Bruce Pelletier**

rb\_pelletier@charter.net

**Vice President, Kent Gage**

khgage@aol.com

**Recording Secretary, Wayne Disegna**

wdisegna@frontier.com

**Treasurer, Kathy McGill**

kmcgill@lenzinsurance.com

## DIRECTORS

Jim Clark

Ruth Crompton

Lynn Hoepfinger

Alison Puffer

Jim Storm

Wayne Andersen

Mark Otto

Dick Todd

Wilhelmina Steketee

Gin Hluchan

Tom Kalina

## COMMITTEES

*Government Relations*—Norval Stephens

*Mailings*—Kathy McGill

*Membership*—Gin Hluchan

*Newsletter*—Wayne Disegna  
Karen Disegna

*Special Events*—Wilhelmina Steketee, Ruth Crompton

*Fish*—Wayne Andersen

*Water Quality*—Lynn Hoepfinger,  
Wayne Disegna

*Weed Study*—Ted Leibole

*Memorials*—Tom Kalina, Kathy McGill

**HLPS is a tax exempt organization under Sec. 501(c) 3 of the IRS code.  
All dues and contributions are tax deductible.**

Hamlin Lake *Currents*  
is published three times-a-year  
by the  
Hamlin Lake Preservation Society  
P.O. Box 178  
Ludington, MI 49431

Our educational objective is to  
present articles on current concerns,  
history, and activities pertaining to  
Hamlin Lake.

### **YOUR CONTRIBUTIONS ARE WELCOME!**

Please address letters to:  
Wayne Disegna  
6647 W. Jackson Road  
Ludington MI 49431  
Phone: 231.843.6841  
wdisegna@frontier.com

*Your comments are welcome!  
E-mail Bruce Pelletier, President,  
rb\_pelletier@charter.net  
or write to the  
Hamlin Lake Preservation Society,  
P.O. Box 178  
Ludington MI 49431*

*All opinions expressed in this  
newsletter are those of the authors  
and are not necessarily  
the opinions of the  
Hamlin Lake Preservation Society.*

Hamlin Lake  
*Currents* Masthead  
Designed by  
Jeff Austin

Hamlin Township  
Transfer Facility on Dewey  
Road

**WINTER SCHEDULE  
October 1—April 30  
Wednesday and Saturday  
9 A.M.—5 P.M.**

**SUMMER SCHEDULE  
May 1—September 30  
Monday, Wednesday, and  
Saturday,  
10 A.M. - 6 P.M.**

HLPS has a website thanks to  
Jim Clark and Jeff Rupp. Take  
a look at  
[www.hamlinlakepreservation.org](http://www.hamlinlakepreservation.org)

\*\*\*\*\*  
\* THE PRESIDENT'S LETTER \*  
\*\*\*\*\*

This is my first letter to the members, as the newly elected President of the Hamlin Lake Preservation Society. I am greatly honored to serve in this capacity and only hope to continue the good work of my predecessor, Jim Pinkerton. I am also grateful for the willingness of our newly elected board members, Ginny Hluchan, Wihelmina Steketee, Dick Todd, Tim Kalina and Mark Otto to serve the residents of Hamlin Lake.

The people who serve with me on this board share a common interest with all of us. They have a deep appreciation for the beauty of Hamlin Lake and wish to help protect it for future generations. We are fortunate to have board members with such a wide variety of capabilities and interests. Their combined backgrounds bring us much experience with water quality, aquatic vegetation and, fisheries management concerns. Not to be overlooked, are those with good computer and financial management backgrounds. Wayne Disegna does a great job with our newsletter and Kathy McGill promises to be a real benefit as our new treasurer. The point is that every board member brings something valuable to help the residents of Hamlin Lake. As a member of HLPS, you too are a vital component. We value your comments and concerns and need your input to help make our organization even stronger. We encourage members to volunteer their assistance with one of our lake restoration, water quality survey, or fund raising events.

Another way to assist our organization is by helping to recruit new members. Don't hesitate to share your newsletter with interested neighbors, letting them know the benefits of joining our Hamlin Lake Preservation Society.

Above all, much gratitude is owed to retiring board members, Jim Pinkerton, Bonnie Wood, Linda Leibole, Diane Boulais, Sue Austin and Lloyd Gearhart for their years of excellent service. I would also like to thank Judy Thorpe, John Thorpe, Alison Puffer, and Peg Gage for their great presentation at the August 6th annual dinner meeting. Their historical account of the Hamlin Lake Dummy Train was both informative and entertaining. By dressing in early period clothes, they added a unique dimension to the program.

Finally, its that time of year again when many of us start looking to head south for warmer temperatures. It may be hard to think ahead to next summer and the wonderful Hamlin Lake's fireworks display, but this is one of our most popular events. I know of no other display that has the marvelous reverberating echo that we get from the surrounding hills. We are looking for donations to help make next summer's fireworks even more spectacular. Our goal is to get a few more of the larger diameter shells that everyone seemed to enjoy so much. Remember the big willow shell that rained down all the way to the ground at the end of the finale?

Have a safe and enjoyable winter and we'll see you back next spring.

Your HLPS President,  
Bruce Pelletier

## ***What Causes Algae Blooms???***

Algae blooms in the lake are caused by many factors.

Hot weather conditions

Bright sunlight

Heavy weed growth

Nutrients

Phosphorus is considered the limiting nutrient within aquatic ecosystems, that is, the growth of plants and algae are primarily limited by the availability of phosphorus.

Overly abundant phosphorus levels contribute to excess aquatic plant growth and dangerous algae blooms in aquatic ecosystems.

**So remember it is important to use non-phosphorus containing fertilizers.**



## Cottage Preservation Task Force

Over the summer the HLPS Cottage Preservation Task Force identified four different properties as potential donations to Historic White Pine Village. The Krone Family has offered one of the cottages on their property on the north shore of the Upper Lake. Laman's Landing has offered one of the original buildings from the Beaune Resort. The Hakanson Family has offered a similar vintage cottage on the Lower Lake near the North Bayou. The Boulee family is considering donating a cottage on their property that dates to the early years of vacationing on Hamlin Lake. The Task Force is very grateful to all these parties for their interest in this

project.

The Executive Director of Historic White Pine Village will decide whether any of these building would be suitable to place in the Village in early October. At the present time he is thinking of situating a suitable cottage at the very entrance to the Village on its northwest most corner directly behind the small pond that visitors pass when they first enter the village.

Once a choice has been made, cost estimates will be developed for preparing a site and moving the structure. Included in this will be costs associated with making the interior accessible for visitors, and for developing interpretive materials about vacationing on Hamlin Lake. The Task Force will be on the lookout for donations of late 19<sup>th</sup> and early 20<sup>th</sup> century items that would have been found in a summer cottage. A new option has been added to the 2012 *Dues Request* form that will allow you to donate to this project. Please be on the lookout for it.

Look for more details about this project in the Spring and Summer newsletters.

## VIEW FROM THE COCKPIT

By Norval Stephens

Sailors seem always to be looking around. Have you noticed that? Sailing is a good deal slower than being in a motor boat, unless you are trolling. We do not troll. We are watching.

What we are watching is the essence of racing in a sailboat.

We watch the wind, the sails, the waves and the other boats. The wind has at least two components: the little cat's-paws atop the water and the waves themselves. The cat's-paws signal a wind change or a gust coming as they sweep toward the boat. That can be critical to picking up just a few seconds on a wind change. Catching a strong gust just right can lift your boat and give you real momentum.

In a race, the sailor is constantly watching the interaction with the sails.

If the sail is luffing, not one smooth stretch of sail, power is lost sailing close to the wind or with the wind abeam. Sailing downwind, the sailor must present the broadest amount of sail to catch the wind. In very light winds, even small but wise adjustments are the difference between momentum and losing it.

The waves themselves really signal old wind, what the wind was that created them. As the waves get larger, they can alter the boat's direction, for good or ill. But, the sailor has to watch to be ready to take advantage of any opportunity.

Sailing into the wind, the waves can push the bow off the best wind angle. Riding down a wave properly can seize the power of gravity. With the wind behind, the sailor must watch for and feel for the effect of the waves and if the boat is balanced well. Sailing when the wind and the waves are not synchronized is very tricky. Getting the wind, the waves and the boat in balance means speed.

The sailor may not have much time to watch the other boats. Our races are relatively short. The sailor can be very busy tuning his boat and the sails to the wind and the waves. If the sailor is in or near the lead, there are no boats that will tell him much of what is ahead. But, farther back in a race, a realization that the wind up ahead has gone slack or changed direction enables the sailor to adjust. One key decision to make is whether to cover a boat sailing behind you if that boat tacks away. In a class race, all the boats the same, the leader will usually cover such a tack, tacking at the same time.

On our lake, the sailor who is not in the lead will often seek other winds when sailing up wind. Sailing down wind offers some opportunity to tack away from the fleet, but with less chance of success.

After every race, the sailor replays the decisions. After the season, the sailor replays some of the decisions that worked and did not. All winter, we remember and think ahead. At least, that is my memory of being in the cockpit this summer.



# HLPS History Column

By Judy Thorpe

## Hamlin Lake Dam

The dam in the Ludington State Park is certainly one of Ludington's most beautiful sights.

The first dam was a wooden one, built in 1856 by Charles Mears. Mears owned thousands of acres of timberland along Lake Michigan and the rights to 200 million feet of standing timber in Mason and Lake counties. The dam created a holding pond in Hamlin Lake so that Mears could float logs that were being cut from the forests in the area. The logs were floated in Hamlin Lake until they could be cut at his sawmill and then shipped to Chicago.

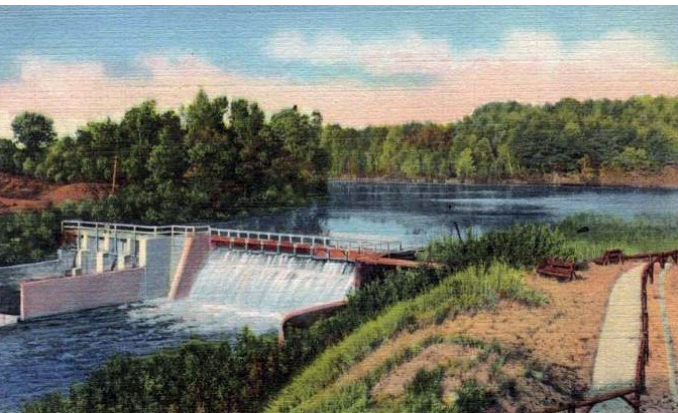
At that time Hamlin Lake was known as Big Sauble Lake. Charles Mears changed the name to Hamlin Lake in 1861 when Hannibal Hamlin was elected Vice-president (1861-1865) on the Republican ticket along with President Abraham Lincoln. A village located near the dam, was also named Hamlin. In the 1870s there were mills, boarding houses, sheds, stores, and a schoolhouse.

The first dam lasted 32 years, collapsing in 1888. A huge wall of water moved much of the village of Hamlin out into Lake Michigan.

Mears then built a second wooden dam that lasted for 24 more years. Finally in 1912, that dam too, broke and washed away most of what was left of the village of Hamlin. A few dwellings remained until the 1930s, but

they were removed by the Civilian Conservation Corps in preparation for construction of the state park.

When the second dam broke, the water went out quickly. Fish were left struggling in the mud. People went out with wagons to capture a load of fish. People from all over Mason County came to see the damage and get their share of fish! At the Piney Ridge Hotel they decided to take advantage of the low water level and clean up the beach, put up a new break wall and docks. Many others around the lakeshore did the same. The Jones Sisters had just purchased the Griswolda Resort on Indian Pete Bayou two weeks before the water went out. They thought Griswolda would be a lucrative business for them, but now the resort was located on a bayou that had been drained of water. There was only a wide bog with a narrow stream running through the center. By now, Charles Mears was no longer involved in logging in the Ludington area so he was not going to rebuild the dam. The people who invested in Hamlin Lake were greatly discouraged. Hamlin Lake had become famous for great fishing and impressive resort hotels and cottages along the lake shore. The resort owners and local business men organized and formed the Incorporated Dam Association to support the dam. They sold shares to raise money for the construction.



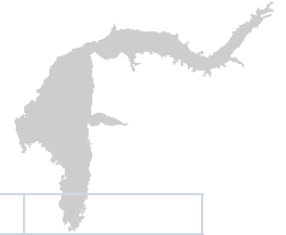
Before construction could begin, George Barnhart and A. E. Cartier traveled by boat up the Sauble River looking for the best location for the new dam. Construction began on our current dam in 1912. The dam association also worked to control water depth and protect resort property.

In February 1913 a meeting was held in Chicago by the Hamlin Lake cottage and resort owners and they were informed at this meeting of the progress on raising funds and beginning construction of the new dam. This new dam would be made of concrete.

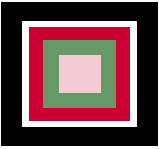
In 1935 the state of Michigan and the US government took over the dam. When the current dam was completed, it increased the size of the lake, especially in the bayous. In Indian Pete Bayou, for example, property that had been privately owned before the 1913 dam was now underwater. This causes a lot of confusion for people now as they try to buy or sell their property and find that some of what they own according to early surveys is under water.

Have you been to the dam in the Ludington State Park lately? Be sure to visit as many improvements have taken place. The dam itself has been made more secure through the efforts of the HLPS and it held firm during the flooding in 2008. There is a very nice parking area close by. The walk to the dam and surrounding area is accessible for people in wheelchairs or if you are pushing a stroller. Great way to spend an afternoon.

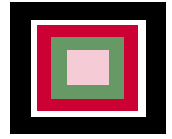
**Hamlin Lake Preservation Society**  
**Annual Treasurer's Report**  
**July 1, 2011 to September 30, 2011**



<b>CHECKING ACCOUNT:</b>				
	<u>Prev. Bal.</u>	<u>Deposits</u>	<u>Disburs.</u>	<u>Balance</u>
	63,810.50	13,645.87	3,129.17	74,327.20
Membership Dues	35,046.62	2,240.00	879.90	36,406.72
Riparian Magazine	253.00	112.00	0.00	365.00
<b>CONTRIBUTIONS:</b>				
General Fund	9,459.55	2,791.00	1,531.23	10,719.32
Fisheries Fund	1,272.09	669.00	0.00	1,941.09
Water Quality	5,519.13	507.00	606.48	5,419.65
Fireworks	4,241.82	4,547.87	0.00	8,789.69
Walleye Stocking	1,119.81	334.00	0.00	1,453.81
Land Reserve Project (Land Purchase)	2,623.52 1,000.00	0.00 0.00	0.00 0.00	2,623.52 1,000.00
Memorials	3,104.96	2,445.00	0.00	5,549.96
Sailing	150.00	0.00	111.56	38.44
<b>(includes #2 CD @ \$5000, #3 CD @ \$15,000 and #4 CD @ \$10,000)</b>				
<b>FIFTH THIRD Bank Certificates of Deposit:</b>				
#1 CD valued @ \$8246.26 matured 8/22 new int. @0.55%				
#2 CD \$1319.01 past int.+ \$39.67 = \$1,370.64 (int. 1/1/11 - 9/24.11 @ 0.75%				
#3 CD \$3145.71 past int. + \$13.72 = \$3159.43 (int.5/23/11 - 8/23/11 @ 0.3%				
#4CD \$1143.91 past int. + \$7.67 = \$1151.58 (int. 5/23/11 - 8/23/11 @ 0.3%				
<b>CHECKING ACCOUNT BALANCE</b>				73,115.87
<b>FIFTH THIRD BANK #1 CD + int. and #2 CD int. + #3 CD int.)</b>				<u>13,927.91</u>
<b>Total</b>				<b>\$87,043.78</b>



# Meeting Report Minutes



## Hamlin Lake Preservation Society Meeting

Sept. 8th, 2011

**Present:** Kent Gage, Wayne Disegna, Jim Clark, Wayne Andersen, Ruth Crompton, Bruce Pelletier, Lynn Hoepfinger, Wil Steketee, Dick Todd, Tom Kalina, Mark Otto, Kathy McGill, and Ginny Hluchan  
Meeting called to order 7:00pm @ Bruce Pelletier's house  
Board members introduced themselves to one another

### Reports

#### Secretary's Report

Minutes of the June 22<sup>nd</sup> meeting and the minutes of the annual meeting were presented and approved.

#### Treasurer's Report

Kathy McGill is in the process of taking over the treasurer's job from Linda Leibole.

The financial statement for the 3rd quarter of 2011 was presented. It was noted that we have a substantial amount of money in our treasury. After some discussion about what should be done with the money, Ginny volunteered to help establish some long range goals that will help the organization to focus on how best to use the available funds.

Kathy indicated that she would like to make some changes in the financial report that would help her in her treasurer's job. The board has no problems with this.

A letter of thanks will be sent to Linda for all her years of wonderful service as the Treasurer of HLPS.

The financial report was approved.

### **COMMITTEE REPORTS**

#### Membership Committee

Our present membership is in the 360 to 370 member range, which is about the same as last year. One of the reasons for the static membership is that we have not had a membership chairman for over a year.

Although no one stepped forward to be membership chairman, 4 people have volunteered to work together as a membership committee. They are Ruth Crompton, Ginny Hluchan, Wil Steketee, and a non-board member Judy Cartier.

#### Water Quality

Lynn described to the new board members our active testing programs with the MLSA and WSCC. The MLSA testing involves our members getting samples for e-coli testing, chlorophyll testing, phosphorous testing, plus doing dissolved oxygen testing and water clarity testing.

WSCC has their own boat and does similar testing on Hamlin Lake and we help support this with annual funding in the range of \$600 to \$1000 per year.

There was discussion about the heavy weed growth this year in the upper lake and the development of very heavy algae blooms which included some blue-green algae. The consensus is that the very warm summer contributed to this phenomenon.

It's time to pull our bricks for the very unscientific zebra mussel study and report the results to Lynn.

There are monofilament recycle boxes available from MLSA. Lynn will obtain these and he and Wayne Andersen will place them at boat launch sites.

#### Fish Committee

Wayne Andersen requested that we change the fish committee to the fisheries committee and expand its purpose beyond just the planting of fish but to also include improving the fishery habitat. He would like to work with Mark Tonello from the DNR to assist them in anyway as they are developing a management plan for Hamlin Lake. Wayne put this request in the form of a motion which was 2<sup>nd</sup> by Ruth Crompton. Motion carried. The exploratory committee will be Wayne Andersen, Jim Storm, Tom Kalina, and Dick Todd.

#### Historic Cottage Committee

Jim Clark reported that a couple of cottages are under consideration for relocation to White Pine Village. The White Pine Village governing board is very interested in having this new display.

The committee is now at the point of making decisions about which cottage will be moved and they will be putting out an appeal for funds to accomplish this. They plan to put an article in the Currents.

Ruth Crompton will also contact Judy Thorpe about writing an historical article for each Currents issue.

### **Duneview Erosion Project**

The erosion problem at the end of Duneview road has been examined and it appears that the road needs to be extended back into the lake by about 40 foot of fill. The road commission has reviewed the situation and does not agree with the need to do this. They suggested a concrete log ramp be used since this is a road end. Jim Clark is presently developing a plan to submit to the DEQ to obtain a permit for the project. A part of the plan is to do proper shoreline landscaping. To this end Jim requested monies to hire a consultant to advise on the proper landscaping. Wayne A. moved that we allow an amount of up to \$500 to be used for this purpose. Motion was 2<sup>nd</sup> by Wayne D. Motion carried

### **OLD BUSINESS**

#### **Fireworks**

The fireworks this year went very well. Our fireworks fund is presently at \$8300 and it looks as if we will be able to have a display equal to last year's next year. The fireworks display for 2012 will be on Sat. July 7<sup>th</sup> with a rain date of July 8<sup>th</sup>.

#### **Ice Cream Social**

The ice cream social was again a success. HLPS made about \$592 on the event. Wil Steketee will again chair the event for 2012.

#### **Annual Dinner Meeting**

The Date for the Annual Dinner Meeting will be Sat. Aug. 4th 2012.

Bruce will see if the township hall is available. With the increase in the price of the dinner this year we were able to cover all expenses and ended up with a surplus of \$216.

#### **Hamlin Lake Swim**

The Hamlin Lake swim from North Bayou to the Nordhouse Dunes was a success. There were 12 swimmers who registered for the swim and 11 successfully completed it. The event raised \$1235 with a surplus of \$720 going to HLPS to be used for lake improvements. A letter of thanks and appreciation will be sent to Becky Reamer who organized this event.

### **NEW BUSINESS**

#### **Election of Officers**

Nominated for board officers were:

President	Bruce Pelletier
Vice President	Kent Gage
Secretary	Wayne Disegna
Treasurer	Kathy McGill

All nominations elected by unanimous vote.

#### **Victory Park improvements**

Wayne Anderson reported that the Nordlund study has been completed. The Eagle Scout is laying out the walking trails in the park and they are starting to work on application for grants to complete the overall project. Wayne stated that many of the grants are of a matching fund sort and if the township can not meet the match they will have to go outside for funds. HLPS has already allocated \$500 for this project.

#### **Memorial Funds Committee**

Our memorial fund has several thousand dollars in it and has received some additional funds. There was discussion about what is the policy was on this matter and it was found that we have no clear guidelines. Kathy McGill and Tom Kalina will work on this problem and come back with some suggestions.

#### **Scholarship for WSCC**

Lynn Hoepfinger made a motion to continue giving a \$1000.00 scholarship to a WSCC student who is studying some area of environmental protection. Mark Otto seconded the motion. Motion passed. Mark Bergstrom at WSCC will be contacted for a list of candidates.

**Next Meeting:** Tuesday May 15<sup>th</sup> 6:30 pm @ Wil Steketee's house



Hamlin Lake Currents



# **Big Sable River Watershed Report**

Summer has passed quickly on the Big Sable River in 2011. The river was enjoyed by many people during the pleasant summer days. There have been some improvements to the river this summer and plans developed for future improvements that will enhance the quality of the Big Sable.

The most prominent improvements have been the completion of the LaSalle Rd Bridge and the Darr Rd Bridge. The south approach to LaSalle Rd Bridge is being graded this week in preparation for the asphalt surface. Darr Rd Bridge is completed. It is very impressive that in these times of funding challenges both projects were completed using the Best Management Practices for the bridges and approaches insuring decades of minimal maintenance funding for these structures. The elimination of erosion at these sites significantly reduces sedimentation of the river. It has been very enjoyable observing the progress of these projects. One needs to be familiar with these sites historically to truly appreciate the value of the new structures.

I would like to thank Grant Township, Freesoil Township, Conservation Resource Alliance and the Mason County Road Commission who were the primary organizations responsible for the planning and execution of these projects.

The Mason County Road Commission has been a very active partner with the Big Sable Watershed Restoration Committee for the past 11 years. Gary Dittmer and Jeff Conklin have attended our meeting to keep us informed of progress on the many stream crossings in the watershed. They have listened to our concerns and responded to the best of their available resources. The road crossings of tributaries as well as the higher profile bridge crossings are monitored and repaired as needed. They are planning future upgrades to the Stephens Rd Bridge in the next 2-3 years. If you see Gary or Jeff take the time to thank them for their leadership in this important component of watershed management and water quality.

We met in May to inspect the proposed sand trap above Stephens Rd. After much thought and discussion it was decided that it is not feasible at this time or the future to install a sand trap on the Big Sable River. We will continue to focus on in stream habitat improvement primarily in the form of large woody debris projects.

We have not completed an in stream project in 2011. We are currently waiting for the work crew to start the project below Stephens Bridge. This site is permitted and ready for the field work. We are prioritizing other sites for future projects. Throughout Northwest Michigan there is currently a backlog of in stream habitat projects. This is a very specialized work process with a limited number of qualified contractors. This work is much more complex than stream bank stabilization projects. In stream habitat work involves specific placement of structures that must consider many factors for proper design and placement. Failure to design or place the structures correctly will cause significant damages to the rivers stream banks and the integrity of the river.

I am personally frustrated by the backlog of this work. I am involved in the Pere Marquette Watershed Council and Pine River Trout Unlimited. Both of these organizations also have projects funded and ready for field work or planning. I am able to tolerate the frustration by reminding myself that this is actually a good situation. Through the generosity and support of the people of West Michigan and the organizations supporting this work we are funding projects faster than we do the projects. This backlog will decrease in the next 1-2 years and we will complete work in a timely manner.

Lynda Herremans has a Start Up Water Quality Monitoring Program for the Lower Big Sable River and Hamlin Lake Tributaries. Lynda will conduct a training day in late October. Lynda is seeking some additional volunteers for this program. Lynda can be contacted at Mason - Lake Conservation District [231-757-3708](tel:231-757-3708) or [lynda-herremans@mi.nacdnet.net](mailto:lynda-herremans@mi.nacdnet.net). This is an opportunity to become involved in protecting the water quality of Hamlin Lake. Please consider volunteering to support this effort.

We will be building a cedar strip wooden canoe for a 2012 Raffle to raise funds to support work on the Big Sable River. Mike Sobanski has volunteered to build the canoe with the help of a few volunteers. This will be the 5th canoe Mike has built and donated to the Big Sable River. What a huge gift to the Sable River from a person that spends time on the Pere Marquette but not the Big Sable.

USFS Botanist Carolyn Henne has worked in the Hamlin Marsh with her crew late this summer and has treated the lone stand of phragmite in the Hamlin Marsh. This stand is nearly eliminated. To my knowledge there is not a stand of phragmite in the Hamlin Marsh. This is very rare for a marsh in Western Michigan not to be infested with phragmite. This invasive plant is of major concern to the habitat quality of marshes.

The LRBOI continue to monitor the rice beds of the Hamlin Marsh. This year they have provided access to some riparian docks in the area of the rice beds of Hamlin Lake. This work was to protect the existing rice in the area.

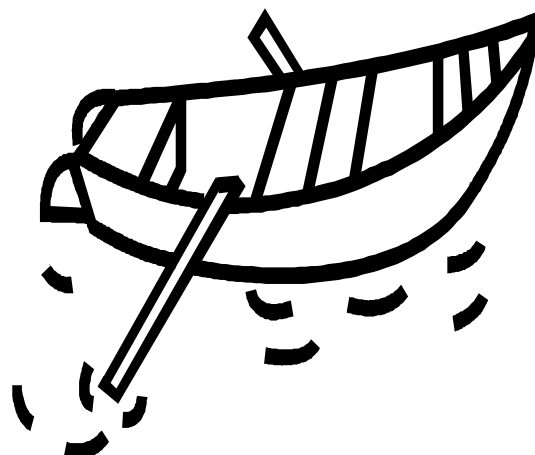
There is a new website for information on the rivers of Northwest Michigan. The web site is [www.northernmichiganstreams.org](http://www.northernmichiganstreams.org). Another interesting web site for those interested in the rivers of Michigan is [michiganrivernews.com](http://michiganrivernews.com). The spring meeting of BSWRC is planned for Friday, 04/27/2012. Take the time to enjoy the autumn outdoors in West Michigan. I have seen predictions that this could be the most spectacular color season in a decade. What a show that will become.

Wayne Andersen, Chairman Big Sable Watershed Restoration Committee

In 2010, the Michigan Department of Environmental Quality -----monitored 206 inland beaches and 224 Great Lake beaches for swimming safety. The limit for these recreational waters is 300 E.Coli per 100 m. 103 (25%) of these beaches had E.Coli advisories or closings. Not a very good record.

The Hamlin Lake Water Quality Team has performed the same testing on Hamlin Lake water for the past eight years. We have never had a problem as shown in the accompanying data. Below are the last 3 years E-Coli testing on Hamlin Lake .

E.Coli Results			
	July 20, 2011	July 21, 2010	July 28, 2009
Collection Site	E.coli/100 ml	E.coli/100 ml	E.coli/100 ml
Narrows	2.0	<1	1
Dunes North	3.0	<1	11
Dunes Middle	8.6	<1	41
Dunes South	3.1	<1	8.6
Entrance to State Park	<1	<1	0
Piney Ridge North	1.0	4.0	0
Piney Ridge South	8.5	<1	0
Tamarac	13.1	36.8	7.4
South Bayou	30.5	48.7	15.8
Middle Bayou	7.5	5.2	4.1
Shoreline north of Middle Bayou	5.2	4.1	3.1
North Bayou	<1	2.0	2
Partridge Point swimming area	8.5	5.2	7.5
Lower Lake--east of deep hole	2.0	<1	5.2
Sunset Bay	2.0	<1	0
Outlet to Indian Pete	2.0	2.0	0
Indian Pete--Outlet to east bayou	1.0	<1	0
Barnhardts	1.0	3.1	1
Wilson Hill	12.1	<1	1
Layman's landing	4.1	2.0	2
Victory Park	8.5	3.1	1
Upper Reaches, Near swans	107.1	9.6	10.9
Upper Lake, North Shore East	18.9	9.6	3.1
Upper Lake, North Shore Middle	8.6	<1	3.1
Rupert Bayou	2.0	<1	0



# *Calendar of Events for 2012*

**Deadline for the Spring  
Currents  
Feb. 4th**

**HLPS ANNUAL  
DINNER MEETING  
Aug. 11th**



**ICE CREAM SOCIAL  
@ Wilson Hill Park  
July 7th**

**Begin Lowering Lake Level  
Oct. 23rd**



**HLPS Fireworks  
Upper Hamlin  
Lake  
July 7th  
Rain date July 8th**

**There's still time to contribute  
to next years fireworks display.  
Contributions need to be  
turned in by Dec. 1st.**

## **Memorials for 2011**

**Fred H. Benseman**

By David & Sally Dierks, Ginny Hluchan

**Marion J. Boardman**

By Helen & Bowie Duncan

**George Boz**

By Dr. Joe & Charlene Jarabek

**Bob Ferguson**

By Caryl Ferguson

**Ralph Fowler**

By Dave & Anne Tarnow

**Carol B. Hittle**

By Max Hittle

**Ray & Neoma Purtell**

By Jack Purtell

**John L. Stephens**

By Bruce & Ginger Terlep, Kay Stephens

**Brandon VanderBroek**

By Carole VanderBroek

**Frank A. Kalina**

By Barbara Bartosiewicz, David & Donna Belfus, Edward & Nancy Carney, Don & Bobbie Clingan, John Jack & E. Polly Hoy Colton, James Frazier Jr., Bob, Pam & Mary Beth Gudas, Stanley & Gail Gudas

Christine Kalina, Philip & Sharon Kalina, Rose Kalina, K's Edgewater Resort, Susan & Doug Erickson,

Tom & Diane Leeming, JoAnn Leeming, Terri Wade, Lynn Taylor, John & Judith Mateja,

Thomas & Patricia Meads, Bill Moody, Lynn & Nancy Pontz, Milan S. & Sheryl Reed

**Irv Lovato**

By Kenneth & Luella Lovato



**Hamlin Lake Preservation Society**  
P.O. Box 178  
Ludington Michigan 49431

NON-PROFIT  
ORGANIZATION  
U.S. POSTAGE  
PAID  
LUDINGTON MI  
PERMIT NO. 78

# **HLPS**

**Hamlin Lake Currents**  
Fall 2011



## **WHAT'S INSIDE?**

<b>HLPS Annual Dinner Meeting</b>	<b>Page 1</b>	<b>Board Meeting Minutes</b>	<b>Page 7 &amp; Page 8</b>
<b>President's Letter</b>	<b>Page 3</b>	<b>Big Sable River Restoration Committee Report</b>	<b>Page 9</b>
<b>Historic Hamlin Cottage Preservation</b>	<b>Page 4</b>	<b>E--Coli Report</b>	<b>Page 10</b>
<b>View from the Cockpit</b>	<b>Page 4</b>	<b>Calendar of Events</b>	<b>Page 11</b>
<b>Hamlin Lake Dam History</b>	<b>Page 5</b>	<b>Memorials</b>	<b>Page 11</b>
<b>Treasurer's Report</b>	<b>Page 6</b>		